

# Using wenglor MEL weCat3D in MERLIC

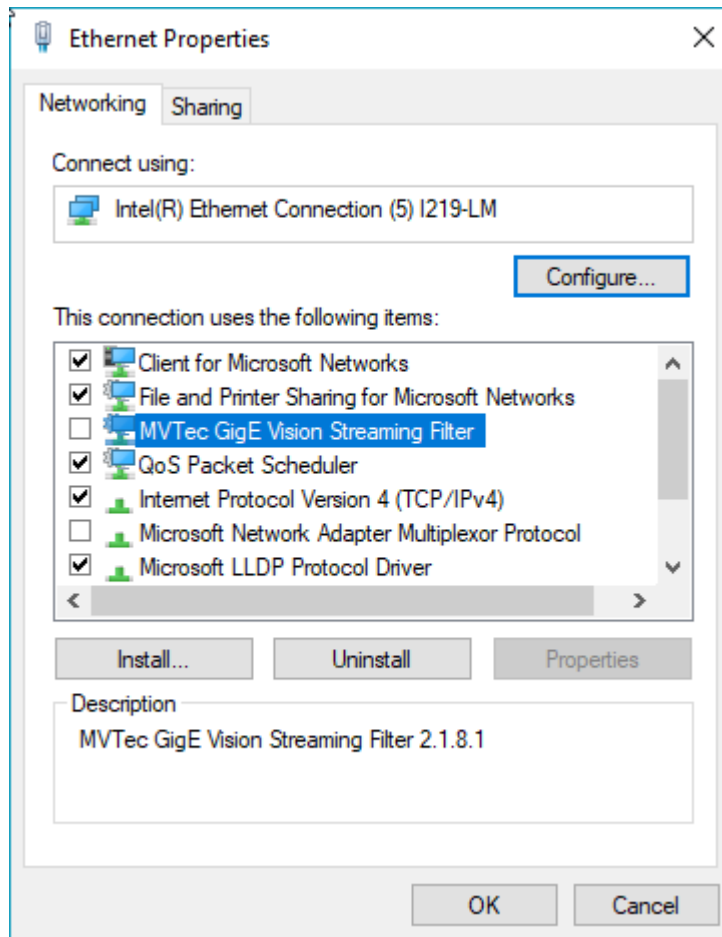
## Recommended Camera Configuration

17 September 2021

## Requirements

It is preconditioned that the 3D sensor has been installed and configured correctly as described in the respective user manual.

In addition you have to disable any streaming filters, including the "MVTec GigE Vision Streaming Filter", for the network interface as shown in the following image:



The wenglor's GigE Vision streaming server needs to be started up with the correct configuration, i.e., by defining the IP address of the device and the IP address of a network interface.

## Configuration of the Camera Parameters

For the use in MERLIC, you have to add the sensor as an image source in the "Image Sources" tab of the MERLIC RTE Setup and adjust the parameters of the 3D sensor that are listed below.

Alternatively, you can also use the tool **Acquisition** → **Acquire Image from Camera** for the configuration and image acquisition.

Parameter Name	Value
PixelFormat	Mono16
NumberOfProfiles	<number of profiles per image>